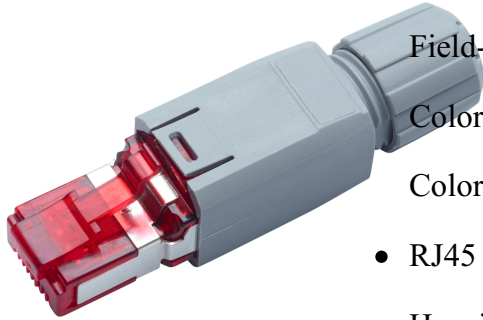


This is the wishlist header

FM45 Connector Cat. 6_A IP20, 4P, TIA 568-A/B, 10x

Datasheet

R815651 966704105 10 Stk.
090.7437 / ähnliche Abbildung



Field-terminated RJ45 connector with housing.

Color housing: gray (RAL 7042).

Color termination block: red.

- RJ45 connector kit
- Housing IP20, plastic
- Instruction manual

Technical Data

DESCRIPTION [UNIT] VALUE/VALUE RANGE

	UL Listed
Standard	ISO/IEC 11801: IEC 60603-7-3
	EN 50173: May 2011
	IEC 60603-7 RJ45, Cat.5
Protection class IP	IP 20
PoE	Yes
Wiring diagram	TIA-568A / TIA-568B

Mechanical Data

DESCRIPTION [UNIT] VALUE/VALUE RANGE

Width	59 mm
Height	14 mm
Depth	14.6 mm

Field-terminated RJ45 plug connector, shielded and unshielded according to IEC 60603-7, ISO/IEC 11801 ed. 2.2: June 2011 and EN 50173-1: May 2011, Cat.6A 8-pole, terminated in IDC technology, suitable for solid or stranded wires, 2- to 8-wire conductors of diameter AWG 26 to AWG 22 (AWG 26/7 - 22/7), housing IP20, for cable diameters of 4.5 mm to 8.0 mm, coding in acc. with TIA 568-A/B. PoE and PoE+ compatible according to IEC 60512-99-001.

Features:

This is the wishlist header

- Protection class: IP20 acc. to IEC 60529
- Color housing: traffic gray (RAL 7042)
- Material housing: PA (UL 94 V-0)
- Color termination block: red

19" Cabinet CMS 42U, 600x1000 mm

Datasheet

R512787 1 Stk.

090.6017 / ähnliche Abbildung



A very strong and sturdy cabinet system designed for use as server cabinet in data centers.

- 2 pairs of 19" profiles (front/back)
- Swing handle with lock
- Front door ventilated 83%
- Back door ventilated 83%

Technical Data

DESCRIPTION [UNIT] VALUE/VALUE RANGE

Protection class IP IP 20

Distributor housing type stand-alone cabinet

Assembly empty

Fastening 19 "

Height units (U) 42 HE

Lockable 1

Mechanical Data

DESCRIPTION [UNIT] VALUE/VALUE RANGE

Width 1978 mm

Height 600 mm

Depth 1000 mm

Color Code RAL 9005 Jet black

This is the wishlist header

19" Cabinet CMS 42U, 600x1200 mm

Datasheet

R512788 1 Stk.

090.6017 / ähnliche Abbildung



A very strong and sturdy cabinet system designed for use as server cabinet in data centers.

- 2 pairs of 19" profiles (front/back)
- Swing handle with lock
- Front door ventilated 83%
- Back door ventilated 83%

Technical Data

DESCRIPTION [UNIT] VALUE/VALUE RANGE

Protection class IP IP 20

Distributor housing type stand-alone cabinet

Assembly empty

Fastening 19 "

Height units (U) 42 HE

Lockable 1

Mechanical Data

DESCRIPTION [UNIT] VALUE/VALUE RANGE

Width 1978 mm

Height 600 mm

Depth 1200 mm

Color Code RAL 9005 Jet black

R&MinteliPhy Manage In-House, feature upgrade 10 enclosures expansion

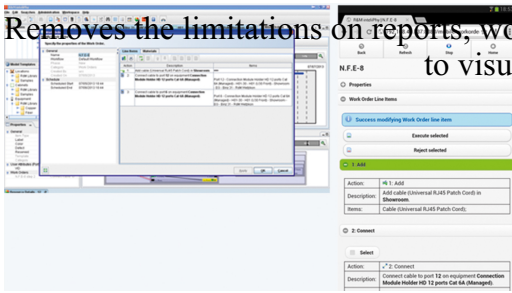
Datasheet

R380130

090.6962 / ähnliche Abbildung

This is the wishlist header

Removes the limitations on reports, work orders, resources and user-based attributes. Adds the possibility to visualize the infrastructure in 3D.

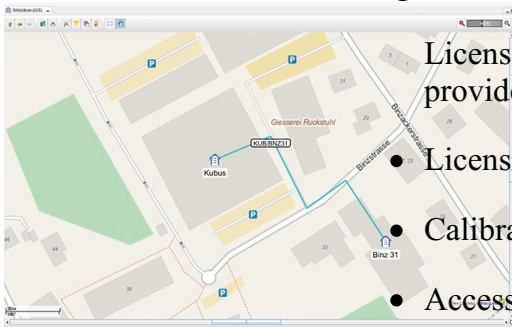


R&MinteliPhy Manage In-House, GIS integration

Datasheet

R380074

030.5301 / ähnliche Abbildung



License for installation on In-House server. Allows access to data provided by geographical information systems (GIS) as background map.

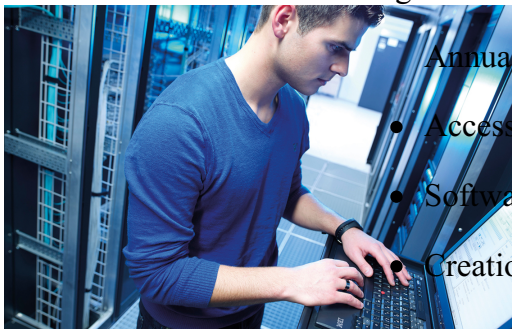
- License for installation on In-House Server
- Calibration of maps with logitude and latitude
- Access to ESRI© ArcGIS© Server
- Access to OpenStreetMap Data

R&MinteliPhy Manage In-House, 10 enclosures, expansion, annual maintenance contract

Datasheet

R380133

090.7133 / ähnliche Abbildung



Annual fee for software updates / upgrades and template creation services.

- Access to the R&MinteliPhy Customer Support Website
- Software updates and upgrades
- Creation of customer specific templates

Installation Cable Cat. 7, S/FTP, 4P, 1000 MHz, LSFRZH, orange, Dca, 1000 m

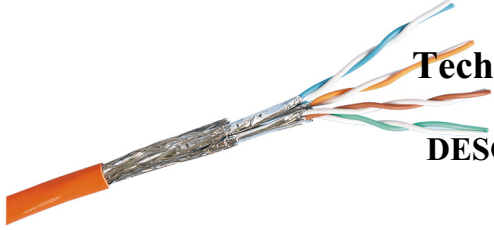
Datasheet

R312595 101771954 1000 m

010.2125 / ähnliche Abbildung

This is the wishlist header

Cat.7, S/FTP cable "advanced Pro". Foil and tin-plated copper braid shielding. 100 Ohm impedance. Data transmission frequency of up to 1000 MHz.



Technical Data

DESCRIPTION [UNIT]	VALUE/VALUE RANGE
Standard	ISO/IEC 11801 ed. 2.2: June 2011 EN 50173-1 IEC 61156-5 2 nd ed. EN 50288-4-1 IEC 61034 IEC 60754-2 CPR fire class: EN50575 IEC 60332-3-24
Protection class IP	IP 20
PoE	Yes
Cable class	installation cable
Cable category	Cat. 7
Cable shielding	S/FTP
Cable jacket material	LSFRZH
Fire class	Dca
Cable jacket characteristics	Zero-halogen Flame-retardant
Cable protection	No protection
Cable overall diameter	Ø 7.5 mm
Conductor diameter	AWG 23
Cable design	normal

This is the wishlist header

DESCRIPTION [UNIT]	VALUE/VALUE RANGE
Number of wires	8
Stranding	4 pairs
Wire type	Wire
Max. test frequency	1000 MHz

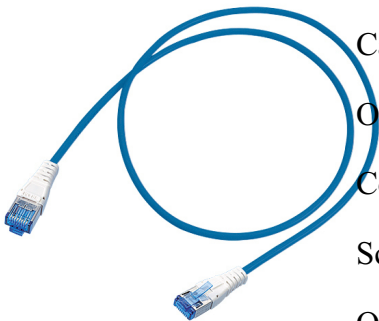
Mechanical Data

DESCRIPTION [UNIT]	VALUE/VALUE RANGE
Cable length	1000 m
Color Code RAL	2003 Pastel orange

Patch Cord Real10 Cat. 6, S/FTP, 4P, LSFRZH, blue, RJ45/s-RJ45/s, 0.5 m

Datasheet

R313818 10 Stk.
042.0014 / ähnliche Abbildung



Cable identification: S/FTP

Outer jacket: LSFRZH

Conductor diameter copper strand: AWG 26/7

Screened in pairs: AL/foil

Overall screen: copper braid

Outer diameter: max. 6.2 mm

Technical Data

DESCRIPTION [UNIT]	VALUE/VALUE RANGE
	Compliant with Cat. 6, Class E (250 MHz) requirements: ISO/IEC 11801 ed. 2.2
Standard	Compliant with Cat. 6 component standard IEC 60603-7-4
	Compliant with Cat. 6 component standard IEC 60603-7-5
	Fulfilled the standard IEC 61935-2:2010

This is the wishlist header

DESCRIPTION [UNIT]	VALUE/VALUE RANGE
Protection class IP	IP 20
PoE	Yes
Connector class	connector
Shielding connector (A)	shielded
Connector type (A)	RJ45
Category connector (A)	Real10 Cat. 6
Shielding connector (B)	shielded
Category connector (B)	RJ45 RJ45
Cable class	patch cord
Cable category	Real10 Cat. 6
Cable shielding	S/FTP
Cable jacket material	LSFRZH
Cable jacket characteristics	Cable, metal-free Zero-halogen Flame-retardant
Cable overall diameter	6.2 mm
Conductor diameter	AWG 26/7
Number of wires	8
Stranding	4 pairs

This is the wishlist header

DESCRIPTION [UNIT]	VALUE/VALUE RANGE
Wire type	stranded wire

Mechanical Data

DESCRIPTION [UNIT]	VALUE/VALUE RANGE
Cable length	0.5 m
Color Code RAL	5012 Light blue

Flexible cable, S/FTP, 4 x 2 x AWG 26/7, LSFRZH, 5012 Light blue. Low-smoke in acc. with IEC 61034, flame-retardant in acc. with IEC 60332-3C and halogen-free in acc. with IEC 60754-1. Halogen-free and heavy-metal free in acc. with EU directives RoHS 2.

Mounted on both sides with

RJ45 connector compliant with Cat. 6 component standard. Key standard: IEC 60603-7 RJ45 category 6; IEC 60603-7-1 to 5. Strain-relief function in acc. with TIA 568-C.

Complies with requirements of Cat. 6 for the establishing of transmission links of class E and class EA in acc. with ISO/IEC 11801 ed. 2.2, June 2011 and EN 50173-1, May 2011 (DIN EN 50173-1). Suitable for 10GBASE-T applications in acc. with IEEE 802.3™ Section Four.

Optional:

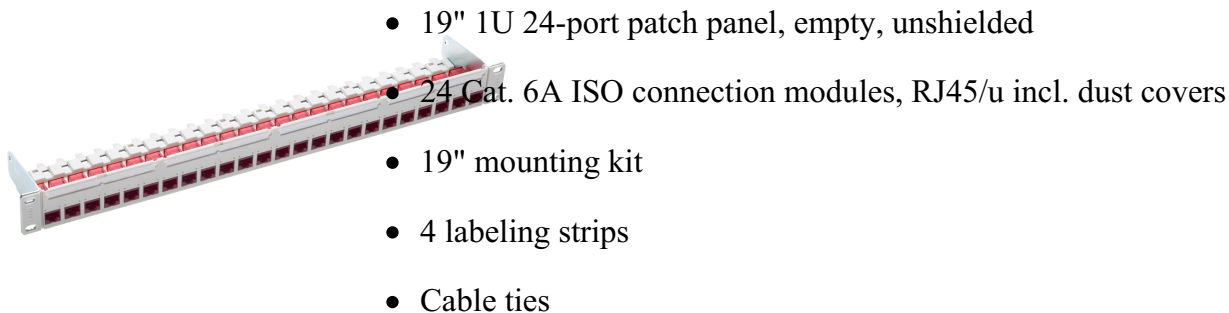
Visual coding, mechanical coding and lock protection.

19" 1U PC Patch Panel 24xRJ45/u, Cat. 6_A, gray, fully populated

Datasheet

R813494 1 Stk.

090.7196 / ähnliche Abbildung



- Installation instructions

Technical Data

This is the wishlist header

DESCRIPTION [UNIT]	VALUE/VALUE RANGE
	IEC 60603-7-41: Electrical Characteristics of the Telecommunication Outlets
Standard	ISO/IEC 11801 ed. 2.2: June 2011 EN 50173-1: May 2011
Protection class IP	IP 20
PoE	Yes
Shielding connector (A)	unshielded
Connector type (A)	RJ45
Category connector (A)	Cat. 6 _A ISO
Number of connectors (A)	24
Holder for connector / module	Special (without mounting plate)
Assembly	fully populated
Fastening	19 "
Rack mounting version	patch panel
Capacity (ports)	24
Height units (U)	1 HE

Mechanical Data

DESCRIPTION [UNIT]	VALUE/VALUE RANGE
Width	482.6 mm
Height	43.65 mm
Depth	83.4 mm
Color	front, medium gray (NCS 2502-B) / steel, blue, chromatinized

Modular patch panel with integrated cable tie shelf, 19" fastening kit, labeling fields with exchangeable labeling strips. The ports are prepared for a visual color coding system and automated infrastructure management systems. Panel polycarbonate, fiber-glass-reinforced, halogen-free material, UL 94 listed and steel: DC01 (1.0330), 1.5 mm. Color front: medium gray (NCS 2502-B) / steel: blue, chromatinized.

RJ45 connection module of Cat. 6A ISO, for the setting up of transmission channels of Class EA with up to 4 plugged connections acc. to ISO/IEC 11801 ed. 2.2, June 2011, EN 50173-1 May 2011 (DIN EN

This is the wishlist header

50173-1) and Class F on 2 pairs, complies with Cat. 6A requirements of the standards ISO/IEC 11801 ed. 2.2, June 2011, EN 50173-1 May 2011, as well the U.S. standard Cat. 6A according to TIA 568-C.2, re-embedded tested in acc. with IEC 60603-7-41 and 60512-27-100, interoperable and backwards compatible with Category 6 and Category 5e.

Suitable for 10GBASE-T applications in acc. with IEEE 802.3™ Section Four up to 500 MHz and 100 m.

Tested in line with R&M's manufacturing control, performing 100% inspection.

Compatible with RJ standard plugs (RJ11, RJ12, RJ45), connection with automatic wire cutting of installation cables AWG 26 – 22 (0.4 mm – 0.65 mm) and flexible cables AWG 26/7 – AWG 22/7 without special tools. X-Separator for individual pair shielding. Parallel pair termination without crossover in acc. with TIA 568-A/B, gold-plated bronze contacts for >1000 mating cycles, IDC contacts with >20 insertion cycles, contact resistance <5 mOhm, dielectric strength >1000 Veff. PoE and PoE+ compatible according to IEC 60512-99-001. 90° wire orientation without bending cable. With integral cable strain relief, including dust cover.

Material: halogen-free and heavy-metal free in acc. with EU directives RoHS 2.

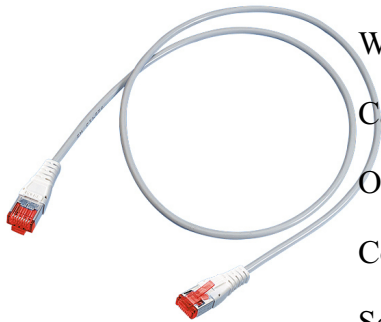
Connection module Cat. 6A ISO, unshielded, with dust cover, cable tie and installation instructions.

Single Cable, Cat. 6_A, 4P, 650MHz, plug Cat. 6_A RJ45/s - plug Cat. 6_A RJ45/s, 1.0 m

Datasheet

R803186 1 Stk.

090.5391 / ähnliche Abbildung



Wiring diagram: TIA 568-A

Cable identification: S/FTP

Outer jacket: LSZH

Conductor diameter: AWG 26/1 (solid wire)

Screened in pairs: AL/foil

Overall screen: copper braid

Outer diameter: 5.8 mm

Technical Data

DESCRIPTION
[UNIT]

VALUE/VALUE RANGE

This is the wishlist header

DESCRIPTION [UNIT]	VALUE/VALUE RANGE
	Compliant with Cat. 6 _A ISO, Class E _A (500 MHz) requirements: ISO/IEC 11801 ed. 2.2
	Complies with Category 6 _A ISO requirements of the standard ISO/IEC 11801 ed. 2.2: June 2011
Standard	Complies with Category 6 _A ISO requirements of the standard EN 50173-1: May 2011
	Complies with Category 6 _A ISO requirements of the standard TIA 568-C.2
	Compliant with Cat. 6 _A ISO component standards IEC 60603-7-51
Protection class IP	IP 20
PoE	Yes
Shielding connector (A)	shielded
Connector type (A)	RJ45
Category connector (A)	Cat. 6 _A ISO
Shielding connector (B)	shielded
Category connector (B)	RJ45 RJ45
Cable category	Cat. 6 _A ISO
Cable shielding	S/FTP
Cable jacket material	LSZH
	Cable, metal-free
Cable jacket characteristics	Zero-halogen Flame-retardant
Cable overall diameter	5.8 mm

This is the wishlist header

DESCRIPTION [UNIT]	VALUE/VALUE RANGE
Conductor diameter	AWG 26
Number of wires	8
Stranding	1 x 4 pairs
Max. test frequency	650 MHz

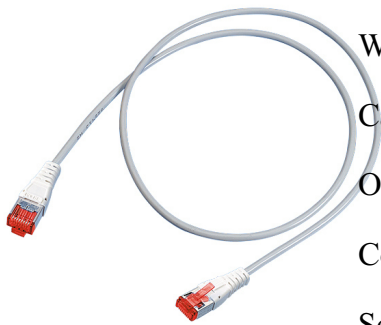
Mechanical Data

DESCRIPTION [UNIT]	VALUE/VALUE RANGE
Cable length	1 m
Color Code RAL	7032 Pebble gray

Single Cable, Cat. 6_A, 4P, 650MHz, plug Cat. 6_A RJ45/s - plug Cat. 6_A RJ45/s, 2.0 m

Datasheet

R803878 1 Stk.
090.5391 / ähnliche Abbildung



Wiring diagram: TIA 568-A

Cable identification: S/FTP

Outer jacket: LSZH

Conductor diameter: AWG 26/1 (solid wire)

Screened in pairs: AL/foil

Overall screen: copper braid

Outer diameter: 5.8 mm

Technical Data

DESCRIPTION [UNIT]	VALUE/VALUE RANGE
-------------------------------	--------------------------

This is the wishlist header

DESCRIPTION [UNIT]	VALUE/VALUE RANGE
	Compliant with Cat. 6 _A ISO, Class E _A (500 MHz) requirements: ISO/IEC 11801 ed. 2.2
	Complies with Category 6 _A ISO requirements of the standard ISO/IEC 11801 ed. 2.2: June 2011
Standard	Complies with Category 6 _A ISO requirements of the standard EN 50173-1: May 2011
	Complies with Category 6 _A ISO requirements of the standard TIA 568-C.2
	Compliant with Cat. 6 _A ISO component standards IEC 60603-7-51
Protection class IP	IP 20
PoE	Yes
Shielding connector (A)	shielded
Connector type (A)	RJ45
Category connector (A)	Cat. 6 _A ISO
Shielding connector (B)	shielded
Category connector (B)	RJ45 RJ45
Cable category	Cat. 6 _A ISO
Cable shielding	S/FTP
Cable jacket material	LSZH
	Cable, metal-free
Cable jacket characteristics	Zero-halogen Flame-retardant
Cable overall diameter	5.8 mm

This is the wishlist header

DESCRIPTION [UNIT]	VALUE/VALUE RANGE
Conductor diameter	AWG 26
Number of wires	8
Stranding	1 x 4 pairs
Max. test frequency	650 MHz

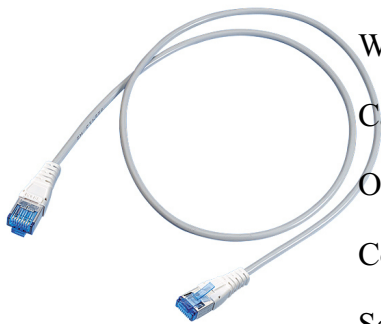
Mechanical Data

DESCRIPTION [UNIT]	VALUE/VALUE RANGE
Cable length	2 m
Color Code RAL	7032 Pebble gray

Single Cable, Cat. 6, 4P, 650MHz, plug Cat. 6 RJ45/s - module Cat. 6 RJ45/s, 7.5 m

Datasheet

R803896 1 Stk.
010.2076 / ähnliche Abbildung



Wiring diagram: TIA 568-A

Cable identification: S/FTP

Outer jacket: LSZH

Conductor diameter: AWG 26/1 (solid wire)

Screened in pairs: AL/foil

Overall screen: copper braid

Outer diameter: 5.8 mm

Technical Data

DESCRIPTION [UNIT]	VALUE/VALUE RANGE
Standard	ISO/IEC 11801
Protection class IP	IP 20
PoE	Yes

This is the wishlist header

DESCRIPTION [UNIT] VALUE/VALUE RANGE

Shielding connector (A)	shielded
Connector type (A)	RJ45
Category connector (A)	Real10 Cat. 6
Shielding connector (B)	shielded
Category connector (B)	RJ45 RJ45
Cable category	Real10 Cat. 6
Cable shielding	S/FTP
Cable jacket material	LSZH Cable, metal-free
Cable jacket characteristics	Zero-halogen Flame-retardant
Cable overall diameter	5.8 mm
Conductor diameter	AWG 26
Number of wires	8
Stranding	1 x 4 pairs
Max. test frequency	650 MHz

Mechanical Data

DESCRIPTION [UNIT] VALUE/VALUE RANGE

Cable length	7.5 m
Color Code RAL	7032 Pebble gray

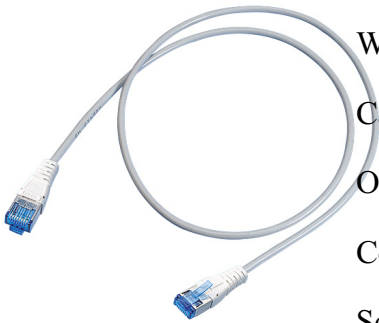
This is the wishlist header

Single Cable, Cat. 6, 4P, 650MHz, plug Cat. 6 RJ45/s - plug Cat. 6 RJ45/s, 3.0 m

Datasheet

R803882 1 Stk.

010.2076 / ähnliche Abbildung



Wiring diagram: TIA 568-A

Cable identification: S/FTP

Outer jacket: LSZH

Conductor diameter: AWG 26/1 (solid wire)

Screened in pairs: AL/foil

Overall screen: copper braid

Outer diameter: 5.8 mm

Technical Data

DESCRIPTION [UNIT] VALUE/VALUE RANGE

Standard ISO/IEC 11801

Protection class IP IP 20

PoE Yes

Shielding connector (A) shielded

Connector type (A) RJ45

Category connector (A) Real10 Cat. 6

Shielding connector (B) shielded

Connector type (B) RJ45

Category connector (B) RJ45

Cable category Real10 Cat. 6

Cable shielding S/FTP

This is the wishlist header

DESCRIPTION [UNIT] VALUE/VALUE RANGE

Cable jacket material	LSZH
	Cable, metal-free
Cable jacket characteristics	Zero-halogen
	Flame-retardant
Cable overall diameter	5.8 mm
Conductor diameter	AWG 26
Number of wires	8
Stranding	1 x 4 pairs
Max. test frequency	650 MHz

Mechanical Data

DESCRIPTION [UNIT] VALUE/VALUE RANGE

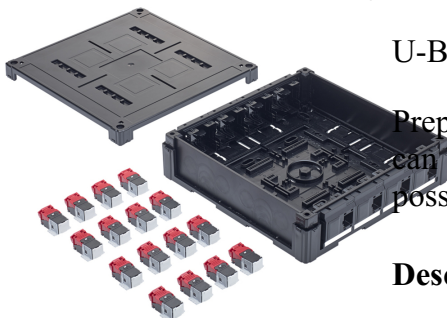
Cable length	3 m
Color Code RAL	7032 Pebble gray

U-Box 4410 8x2xRJ45/u Cat.6_A EL

Datasheet

R832959 1 Stk.

090.7716 / ähnliche Abbildung



U-Box with 16x modules Cat.6A EL prepare to equip

Prepared U-Box for the data cabling to open up workplaces. The U-Box can be installed in double floors or a track. Current connection is easily possible by means of a connecting cable with a suitable power box.

Description

Prepared U-Box for the data cabling to open up workplaces. The U-Box can be installed in double floors or a track. Current connection is easily possible by means of a connecting cable with a suitable power box.

Technical Data

This is the wishlist header

DESCRIPTION [UNIT] VALUE/VALUE RANGE

Protection class IP IP 20

Outlet type outlet

Mechanical Data

DESCRIPTION [UNIT] VALUE/VALUE RANGE

Color Code RAL 9005 Jet black

U-Box 4210 4xT13/1xCG M20

Datasheet

R832956 1 Stk.

090.7723 / ähnliche Abbildung



U-Box with 4x T13 - outlet pre-wired + cable entry M20

The U-box pre-wired and wired is suitable for double floors / Wall-ceiling mounting and cable tray. It can also be docked to a U-box for pure data transmission by means of connecting wings.

Description

The U-box pre-wired and wired is suitable for double floors / Wall-ceiling mounting and cable tray. It can also be docked to a U-box for pure data transmission by means of connecting wings.

Technical Data

DESCRIPTION [UNIT] VALUE/VALUE RANGE

Protection class IP IP 20

Outlet type T13

Mechanical Data

DESCRIPTION [UNIT] VALUE/VALUE RANGE

Color Code RAL 9005 Jet black

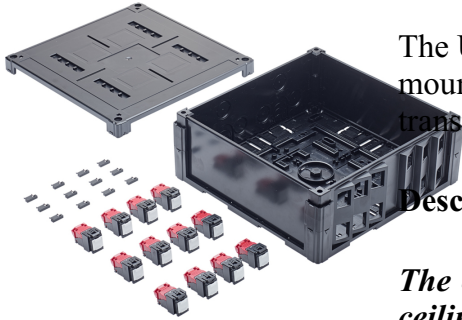
This is the wishlist header

U-Box 4415 12xRJ45/u Cat.6A EL Snap-in

Datasheet

R832961 1 Stk.

090.7715 / ähnliche Abbildung



The U-box pre-wired and wired is suitable for double floors / Wall-ceiling mounting and cable tray. It can also be docked to a U-box for pure data transmission by means of connecting wings.

Description

The U-box pre-wired and wired is suitable for double floors / Wall-ceiling mounting and cable tray. It can also be docked to a U-box for pure data transmission by means of connecting wings.

Technical Data

DESCRIPTION [UNIT] VALUE/VALUE RANGE

Protection class IP IP 20

Outlet type outlet

Mechanical Data

DESCRIPTION [UNIT] VALUE/VALUE RANGE

Color Code RAL 9005 Jet black

This is the wishlist header

This is content of the last page entered from the last page, but changed in the configuraiton file of the country.