

This is the wishlist header

Typo sdjlkfhaslkd askl

aksljdhasdn

alskjhfdklj

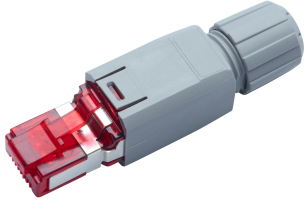


This is the wishlist header

FM45 Connector Cat. 6A IP20, 4P, TIA 568-A/B, 10x

Datasheet

R815651 966704105 10 Stk.
090.7437 / ähnliche Abbildung



Field-terminated RJ45 connector with housing.

Color housing: gray (RAL 7042).

Color termination block: red.

- RJ45 connector kit
- Housing IP20, plastic

- Instruction manual

Technical Data

| DESCRIPTION [UNIT] | VALUE/VALUE RANGE |
|---------------------|---|
| | UL Listed |
| Standard | ISO/IEC 11801: IEC 60603-7-3 EN 50173: May 2011 IEC 60603-7 RJ45, Cat.5 |
| Protection class IP | IP 20 |
| PoE | Yes |
| Wiring diagram | TIA-568A / TIA-568B |

Mechanical Data

| DESCRIPTION [UNIT] | VALUE/VALUE RANGE |
|--------------------|-------------------|
| Width | 59 mm |
| Height | 14 mm |
| Depth | 14.6 mm |

Field-terminated RJ45 plug connector, shielded and unshielded according to IEC 60603-7, ISO/IEC 11801 ed. 2.2: June 2011 and EN 50173-1: May 2011, Cat.6A 8-pole, terminated in IDC technology, suitable for solid or stranded wires, 2- to 8-wire conductors of diameter AWG 26 to AWG 22 (AWG 26/7 - 22/7), housing IP20, for cable diameters of 4.5 mm to 8.0 mm, coding in acc. with TIA 568-A/B. PoE and PoE+ compatible according to IEC 60512-99-001.

Features:

- Protection class: IP20 acc. to IEC 60529
- Color housing: traffic gray (RAL 7042)
- Material housing: PA (UL 94 V-0)
- Color termination block: red

19" Cabinet CMS 42U, 600x1000 mm

Datasheet

R512787 1 Stk.
090.6017 / ähnliche Abbildung



A very strong and sturdy cabinet system designed for use as server cabinet in data centers.

- 2 pairs of 19" profiles (front/back)
- Swing handle with lock
- Front door ventilated 83%
- Back door ventilated 83%

Technical Data

| DESCRIPTION [UNIT] | VALUE/VALUE RANGE |
|---------------------|-------------------|
| Protection class IP | IP 20 |

This is the wishlist header

DESCRIPTION [UNIT] VALUE/VALUE RANGE

Distributor housing type stand-alone cabinet

Assembly empty

Fastening 19 "

Height units (U) 42 HE

Lockable 1

Mechanical Data

DESCRIPTION [UNIT] VALUE/VALUE RANGE

Width 1978 mm

Height 600 mm

Depth 1000 mm

Color Code RAL 9005 Jet black

19" Cabinet CMS 42U, 600x1200 mm

Datasheet

R512788 1 Stk.
090.6017 / ähnliche Abbildung



A very strong and sturdy cabinet system designed for use as server cabinet in data centers.

- 2 pairs of 19" profiles (front/back)
- Swing handle with lock
- Front door ventilated 83%
- Back door ventilated 83%

Technical Data

DESCRIPTION [UNIT] VALUE/VALUE RANGE

Protection class IP IP 20

Distributor housing type stand-alone cabinet

Assembly empty

Fastening 19 "

Height units (U) 42 HE

Lockable 1

Mechanical Data

DESCRIPTION [UNIT] VALUE/VALUE RANGE

Width 1978 mm

Height 600 mm

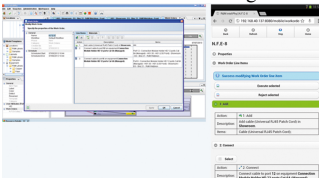
Depth 1200 mm

Color Code RAL 9005 Jet black

R&MinteliPhy Manage In-House, feature upgrade 10 enclosures expansion

Datasheet

R380130
090.6962 / ähnliche Abbildung



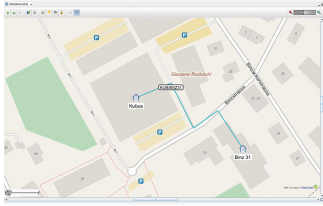
Removes the limitations on reports, work orders, resources and user-based attributes. Adds the possibility to visualize the infrastructure in 3D.

This is the wishlist header

R&MinteliPhy Manage In-House, GIS integration

Datasheet

R380074
030.5301 / ähnliche Abbildung



- Access to OpenStreetMap Data

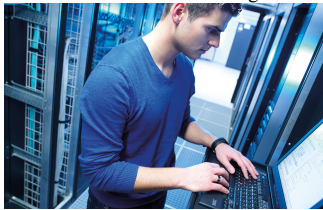
License for installation on In-House server. Allows access to data provided by geographical information systems (GIS) as background map.

- License for installation on In-House Server
- Calibration of maps with longitude and latitude
- Access to ESRI© ArcGIS© Server

R&MinteliPhy Manage In-House, 10 enclosures, expansion, annual maintenance contract

Datasheet

R380133
090.7133 / ähnliche Abbildung



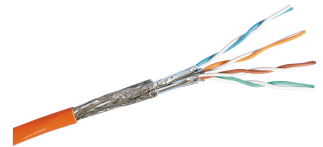
Annual fee for software updates / upgrades and template creation services.

- Access to the R&MinteliPhy Customer Support Website
- Software updates and upgrades
- Creation of customer specific templates

Installation Cable Cat. 7, S/FTP, 4P, 1000 MHz, LSFRZH, orange, Dca, 1000 m

Datasheet

R312595 101771954 1000 m
010.2125 / ähnliche Abbildung



Cat.7, S/FTP cable "advanced Pro". Foil and tin-plated copper braid shielding. 100 Ohm impedance. Data transmission frequency of up to 1000 MHz.

Technical Data

| DESCRIPTION [UNIT] | VALUE/VALUE RANGE |
|-----------------------|----------------------------------|
| | ISO/IEC 11801 ed. 2.2: June 2011 |
| | EN 50173-1 |
| | IEC 61156-5 2 nd ed. |
| Standard | EN 50288-4-1 |
| | IEC 61034 |
| | IEC 60754-2 |
| | CPR fire class: EN50575 |
| | IEC 60332-3-24 |
| Protection class IP | IP 20 |
| PoE | Yes |
| Cable class | installation cable |
| Cable category | Cat. 7 |
| Cable shielding | S/FTP |
| Cable jacket material | LSFRZH |
| Fire class | Dca |

This is the wishlist header

| DESCRIPTION [UNIT] | VALUE/VALUE RANGE |
|------------------------------|-------------------|
| Cable jacket characteristics | Zero-halogen |
| | Flame-retardant |
| Cable protection | No protection |
| Cable overall diameter | Ø 7.5 mm |
| Conductor diameter | AWG 23 |
| Cable design | normal |
| Number of wires | 8 |
| Stranding | 4 pairs |
| Wire type | Wire |
| Max. test frequency | 1000 MHz |

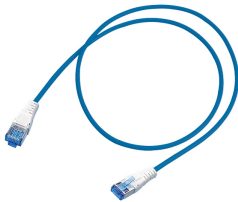
Mechanical Data

| DESCRIPTION [UNIT] | VALUE/VALUE RANGE |
|--------------------|--------------------|
| Cable length | 1000 m |
| Color Code RAL | 2003 Pastel orange |

Patch Cord Real10 Cat. 6, S/FTP, 4P, LSFRZH, blue, RJ45/s-RJ45/s, 0.5 m

Datasheet

R313818 10 Stk.
042.0014 / ähnliche Abbildung



Cable identification: S/FTP
Outer jacket: LSFRZH
Conductor diameter copper strand: AWG 26/7
Screened in pairs: AL/foil
Overall screen: copper braid

Outer diameter: max. 6.2 mm

Technical Data

| DESCRIPTION [UNIT] | VALUE/VALUE RANGE |
|-------------------------|--|
| Standard | Compliant with Cat. 6, Class E (250 MHz) requirements: ISO/IEC 11801 ed. 2.2 |
| | Compliant with Cat. 6 component standard IEC 60603-7-4 |
| | Compliant with Cat. 6 component standard IEC 60603-7-5 |
| | Fulfilled the standard IEC 61935-2:2010 |
| Protection class IP | IP 20 |
| PoE | Yes |
| Connector class | connector |
| Shielding connector (A) | shielded |
| Connector type (A) | RJ45 |
| Category connector (A) | Real10 Cat. 6 |
| Shielding connector (B) | shielded |

This is the wishlist header

| DESCRIPTION [UNIT] | VALUE/VALUE RANGE |
|------------------------------|---------------------------------|
| Category connector (B) | RJ45 RJ45 |
| Cable class | patch cord |
| Cable category | Real10 Cat. 6 |
| Cable shielding | S/FTP |
| Cable jacket material | LSFRZH Cable, metal-free |
| Cable jacket characteristics | Zero-halogen Flame-retardant |
| Cable overall diameter | 6.2 mm |
| Conductor diameter | AWG 26/7 |
| Number of wires | 8 |
| Stranding | 4 pairs |
| Wire type | stranded wire |

Mechanical Data

| DESCRIPTION [UNIT] | VALUE/VALUE RANGE |
|--------------------|-------------------|
| Cable length | 0.5 m |
| Color Code RAL | 5012 Light blue |

Flexible cable, S/FTP, 4 x 2 x AWG 26/7, LSFRZH, 5012 Light blue. Low-smoke in acc. with IEC 61034, flame-retardant in acc. with IEC 60332-3C and halogen-free in acc. with IEC 60754-1. Halogen-free and heavy-metal free in acc. with EU directives RoHS 2.

Mounted on both sides with

RJ45 connector compliant with Cat. 6 component standard. Key standard: IEC 60603-7 RJ45 category 6; IEC 60603-7-1 to 5. Strain-relief function in acc. with TIA 568-C.

Complies with requirements of Cat. 6 for the establishing of transmission links of class E and class EA in acc. with ISO/IEC 11801 ed. 2.2, June 2011 and EN 50173-1, May 2011 (DIN EN 50173-1). Suitable for 10GBASE-T applications in acc. with IEEE 802.3™ Section Four.

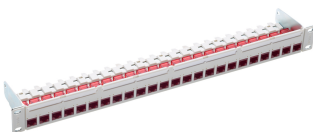
Optional:

Visual coding, mechanical coding and lock protection.

19" 1U PC Patch Panel 24xRJ45/u, Cat. 6A, gray, fully populated

Datasheet

R813494 1 Stk.
090.7196 / ähnliche Abbildung



- 19" 1U 24-port patch panel, empty, unshielded
- 24 Cat. 6A ISO connection modules, RJ45/u incl. dust covers
- 19" mounting kit
- 4 labeling strips
- Cable ties

- Installation instructions

Technical Data

| DESCRIPTION [UNIT] | VALUE/VALUE RANGE |
|--------------------|-------------------|
|--------------------|-------------------|

This is the wishlist header

| DESCRIPTION [UNIT] | VALUE/VALUE RANGE |
|-------------------------------|---|
| Standard | IEC 60603-7-41: Electrical Characteristics of the Telecommunication Outlets ISO/IEC 11801 ed. 2.2: June 2011 EN 50173-1: May 2011 |
| Protection class IP | IP 20 |
| PoE | Yes |
| Shielding connector (A) | unshielded |
| Connector type (A) | RJ45 |
| Category connector (A) | Cat. 6 _A ISO |
| Number of connectors (A) | 24 |
| Holder for connector / module | Special (without mounting plate) |
| Assembly | fully populated |
| Fastening | 19 " |
| Rack mounting version | patch panel |
| Capacity (ports) | 24 |
| Height units (U) | 1 HE |

Mechanical Data

| DESCRIPTION [UNIT] | VALUE/VALUE RANGE |
|--------------------|--|
| Width | 482.6 mm |
| Height | 43.65 mm |
| Depth | 83.4 mm |
| Color | front, medium gray (NCS 2502-B) / steel, blue, chromitized |

Modular patch panel with integrated cable tie shelf, 19" fastening kit, labeling fields with exchangeable labeling strips. The ports are prepared for a visual color coding system and automated infrastructure management systems. Panel polycarbonate, fiber-glass-reinforced, halogen-free material, UL 94 listed and steel: DC01 (1.0330), 1.5 mm. Color front: medium gray (NCS 2502-B) / steel: blue, chromitized.

RJ45 connection module of Cat. 6A ISO, for the setting up of transmission channels of Class EA with up to 4 plugged connections acc. to ISO/IEC 11801 ed. 2.2, June 2011, EN 50173-1 May 2011 (DIN EN 50173-1) and Class F on 2 pairs, complies with Cat. 6A requirements of the standards ISO/IEC 11801 ed. 2.2, June 2011, EN 50173-1 May 2011, as well the U.S. standard Cat. 6A according to TIA 568-C.2, re-embedded tested in acc. with IEC 60603-7-41 and 60512-27-100, interoperable and backwards compatible with Category 6 and Category 5e.

Suitable for 10GBASE-T applications in acc. with IEEE 802.3™ Section Four up to 500 MHz and 100 m.

Tested in line with R&M's manufacturing control, performing 100% inspection.

Compatible with RJ standard plugs (RJ11, RJ12, RJ45), connection with automatic wire cutting of installation cables AWG 26 – 22 (0.4 mm – 0.65 mm) and flexible cables AWG 26/7 – AWG 22/7 without special tools. X-Separator for individual pair shielding. Parallel pair termination without crossover in acc. with TIA 568-A/B, gold-plated bronze contacts for >1000 mating cycles, IDC contacts with >20 insertion cycles, contact resistance <5 mOhm, dielectric strength >1000 Veff. PoE and PoE+ compatible according to IEC 60512-99-001. 90° wire orientation without bending cable. With integral cable strain relief, including dust cover.

Material: halogen-free and heavy-metal free in acc. with EU directives RoHS 2.

Connection module Cat. 6A ISO, unshielded, with dust cover, cable tie and installation instructions.

Single Cable, Cat. 6_A, 4P, 650MHz, plug Cat. 6_A RJ45/s - plug Cat. 6_A RJ45/s, 1.0 m

Datasheet

R803186 1 Stk.
090.5391 / ähnliche Abbildung



Wiring diagram: TIA 568-A
Cable identification: S/FTP
Outer jacket: LSZH
Conductor diameter: AWG 26/1 (solid wire)
Screened in pairs: AL/foil

This is the wishlist header

Overall screen: copper braid

Outer diameter: 5.8 mm

Technical Data

| DESCRIPTION [UNIT] | VALUE/VALUE RANGE |
|------------------------------|---|
| Standard | Compliant with Cat. 6 _A ISO, Class E _A (500 MHz) requirements: ISO/IEC 11801 ed. 2.2 Complies with Category 6 _A ISO requirements of the standard ISO/IEC 11801 ed. 2.2: June 2011 Complies with Category 6 _A ISO requirements of the standard EN 50173-1: May 2011 Complies with Category 6 _A ISO requirements of the standard TIA 568-C.2 Compliant with Cat. 6 _A ISO component standards IEC 60603-7-51 |
| Protection class IP | IP 20 |
| PoE | Yes |
| Shielding connector (A) | shielded |
| Connector type (A) | RJ45 |
| Category connector (A) | Cat. 6 _A ISO |
| Shielding connector (B) | shielded |
| Category connector (B) | RJ45 RJ45 |
| Cable category | Cat. 6 _A ISO |
| Cable shielding | S/FTP |
| Cable jacket material | LSZH Cable, metal-free |
| Cable jacket characteristics | Zero-halogen Flame-retardant |
| Cable overall diameter | 5.8 mm |
| Conductor diameter | AWG 26 |
| Number of wires | 8 |
| Stranding | 1 x 4 pairs |
| Max. test frequency | 650 MHz |

Mechanical Data

| DESCRIPTION [UNIT] | VALUE/VALUE RANGE |
|--------------------|-------------------|
| Cable length | 1 m |
| Color Code RAL | 7032 Pebble gray |

Single Cable, Cat. 6_A, 4P, 650MHz, plug Cat. 6_A RJ45/s - plug Cat. 6_A RJ45/s, 2.0 m

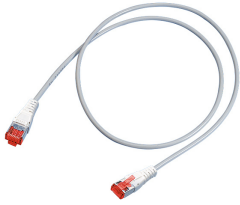
Datasheet

R803878 1 Stk.
090.5391 / ähnliche Abbildung

Wiring diagram: TIA 568-A

Cable identification: S/FTP

This is the wishlist header



Outer jacket: LSZH
Conductor diameter: AWG 26/1 (solid wire)
Screened in pairs: AL/foil
Overall screen: copper braid
Outer diameter: 5.8 mm

Technical Data

| DESCRIPTION [UNIT] | VALUE/VALUE RANGE |
|------------------------------|---|
| Standard | Compliant with Cat. 6 _A ISO, Class E _A (500 MHz) requirements: ISO/IEC 11801 ed. 2.2 Complies with Category 6 _A ISO requirements of the standard ISO/IEC 11801 ed. 2.2: June 2011 Complies with Category 6 _A ISO requirements of the standard EN 50173-1: May 2011 Complies with Category 6 _A ISO requirements of the standard TIA 568-C.2 Compliant with Cat. 6 _A ISO component standards IEC 60603-7-51 |
| Protection class IP | IP 20 |
| PoE | Yes |
| Shielding connector (A) | shielded |
| Connector type (A) | RJ45 |
| Category connector (A) | Cat. 6 _A ISO |
| Shielding connector (B) | shielded |
| Category connector (B) | RJ45 RJ45 |
| Cable category | Cat. 6 _A ISO |
| Cable shielding | S/FTP |
| Cable jacket material | LSZH Cable, metal-free |
| Cable jacket characteristics | Zero-halogen Flame-retardant |
| Cable overall diameter | 5.8 mm |
| Conductor diameter | AWG 26 |
| Number of wires | 8 |
| Stranding | 1 x 4 pairs |
| Max. test frequency | 650 MHz |

Mechanical Data

| DESCRIPTION [UNIT] | VALUE/VALUE RANGE |
|--------------------|-------------------|
| Cable length | 2 m |
| Color Code RAL | 7032 Pebble gray |

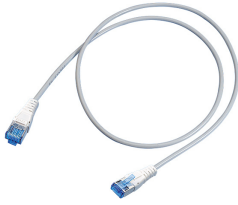
Single Cable, Cat. 6, 4P, 650MHz, plug Cat. 6 RJ45/s - module Cat. 6 RJ45/s, 7.5 m

Datasheet

R803896 1 Stk.

This is the wishlist header

010.2076 / ähnliche Abbildung



Wiring diagram: TIA 568-A

Cable identification: S/FTP

Outer jacket: LSZH

Conductor diameter: AWG 26/1 (solid wire)

Screened in pairs: AL/foil

Overall screen: copper braid

Outer diameter: 5.8 mm

Technical Data

| DESCRIPTION [UNIT] | VALUE/VALUE RANGE |
|------------------------------|--|
| Standard | ISO/IEC 11801 |
| Protection class IP | IP 20 |
| PoE | Yes |
| Shielding connector (A) | shielded |
| Connector type (A) | RJ45 |
| Category connector (A) | Real10 Cat. 6 |
| Shielding connector (B) | shielded |
| Connector type (B) | RJ45 |
| Category connector (B) | RJ45 |
| Cable category | Real10 Cat. 6 |
| Cable shielding | S/FTP |
| Cable jacket material | LSZH |
| Cable jacket characteristics | Cable, metal-free Zero-halogen Flame-retardant |
| Cable overall diameter | 5.8 mm |
| Conductor diameter | AWG 26 |
| Number of wires | 8 |
| Stranding | 1 x 4 pairs |
| Max. test frequency | 650 MHz |

Mechanical Data

| DESCRIPTION [UNIT] | VALUE/VALUE RANGE |
|--------------------|-------------------|
| Cable length | 7.5 m |
| Color Code RAL | 7032 Pebble gray |

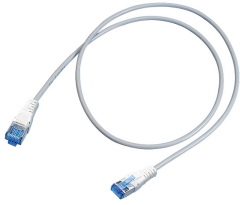
Single Cable, Cat. 6, 4P, 650MHz, plug Cat. 6 RJ45/s - plug Cat. 6 RJ45/s, 3.0 m

Datasheet

R803882 1 Stk.

010.2076 / ähnliche Abbildung

This is the wishlist header



Wiring diagram: TIA 568-A
Cable identification: S/FTP
Outer jacket: LSZH
Conductor diameter: AWG 26/1 (solid wire)
Screened in pairs: AL/foil

Overall screen: copper braid

Outer diameter: 5.8 mm

Technical Data

| DESCRIPTION [UNIT] | VALUE/VALUE RANGE |
|------------------------------|-------------------|
| Standard | ISO/IEC 11801 |
| Protection class IP | IP 20 |
| PoE | Yes |
| Shielding connector (A) | shielded |
| Connector type (A) | RJ45 |
| Category connector (A) | Real10 Cat. 6 |
| Shielding connector (B) | shielded |
| Connector type (B) | RJ45 |
| Category connector (B) | RJ45 |
| Cable category | Real10 Cat. 6 |
| Cable shielding | S/FTP |
| Cable jacket material | LSZH |
| | Cable, metal-free |
| Cable jacket characteristics | Zero-halogen |
| | Flame-retardant |
| Cable overall diameter | 5.8 mm |
| Conductor diameter | AWG 26 |
| Number of wires | 8 |
| Stranding | 1 x 4 pairs |
| Max. test frequency | 650 MHz |

Mechanical Data

| DESCRIPTION [UNIT] | VALUE/VALUE RANGE |
|--------------------|-------------------|
| Cable length | 3 m |
| Color Code RAL | 7032 Pebble gray |

U-Box 4410 8x2xRJ45/u Cat.6_A EL

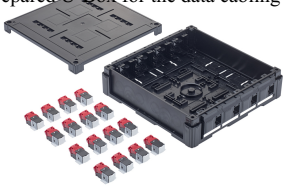
Datasheet

R832959 1 Stk.
090.7716 / ähnliche Abbildung

U-Box with 16x modules Cat.6A EL prepare to equip

This is the wishlist header

Prepared U-Box for the data cabling to open up workplaces. The U-Box can be installed in double floors or a track. Current connection is easily possible by means of a connecting cable with a suitable power box.



Description

Prepared U-Box for the data cabling to open up workplaces. The U-Box can be installed in double floors or a track. Current connection is easily possible by means of a connecting cable with a suitable power box.

Technical Data

DESCRIPTION [UNIT] VALUE/VALUE RANGE

Protection class IP IP 20

Outlet type outlet

Mechanical Data

DESCRIPTION [UNIT] VALUE/VALUE RANGE

Color Code RAL 9005 Jet black

U-Box 4210 4xT13/1xCG M20

Datasheet

R832956 1 Stk.
090.7723 / ähnliche Abbildung



U-Box with 4x T13 - outlet pre-wired + cable entry M20

The U-box pre-wired and wired is suitable for double floors / Wall-ceiling mounting and cable tray. It can also be docked to a U-box for pure data transmission by means of connecting wings.

Description

The U-box pre-wired and wired is suitable for double floors / Wall-ceiling mounting and cable tray. It can also be docked to a U-box for pure data transmission by means of connecting wings.

Technical Data

DESCRIPTION [UNIT] VALUE/VALUE RANGE

Protection class IP IP 20

Outlet type T13

Mechanical Data

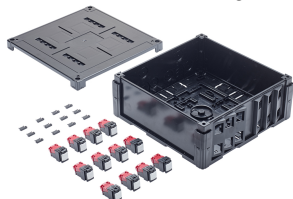
DESCRIPTION [UNIT] VALUE/VALUE RANGE

Color Code RAL 9005 Jet black

U-Box 4415 12xRJ45/u Cat.6A EL Snap-in

Datasheet

R832961 1 Stk.
090.7715 / ähnliche Abbildung



The U-box pre-wired and wired is suitable for double floors / Wall-ceiling mounting and cable tray. It can also be docked to a U-box for pure data transmission by means of connecting wings.

Description

The U-box pre-wired and wired is suitable for double floors / Wall-ceiling mounting and cable tray. It can also be docked to a U-box for pure data transmission by means of connecting wings.

Technical Data

DESCRIPTION [UNIT] VALUE/VALUE RANGE

This is the wishlist header

DESCRIPTION [UNIT] VALUE/VALUE RANGE

Protection class IP IP 20

Outlet type outlet

Mechanical Data

DESCRIPTION [UNIT] VALUE/VALUE RANGE

Color Code RAL 9005 Jet black

This is the wishlist header

This is content of the last page entered from the last page, but changed in the configuraiton file of the country.