

This is my title

your first subtitle

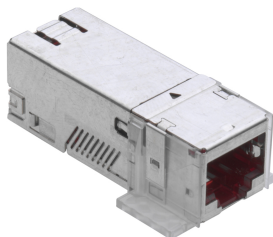
saecond subtitle



Product information

Connection Module Cat. 6A, 1xRJ45/s, 10x

R509504
966733885
10 Stk.



090.5360 / ähnliche Abbildung

The module for the highest standards, guarantees the best performance in the 10 Gigabit Ethernet cabling.

- RJ45 Cat. 6A ISO connection module, shielded
- Mounting plate
- EMC cover
- Dust cover
- Cable tie
- Installation instructions

The R&Mfreenet Cat. 6A shielded connection modules, part of the Advanced cabling system, are ideal for voice, fast data transmissions and high bandwidth applications. This high-performance Cat. 6A module is perfect for use in 10 Gigabit Ethernet (10GBASE-T) and future high-speed applications to 500 MHz.

Description



The R&Mfreenet Cat. 6A shielded connection modules, part of the Advanced cabling system, are ideal for voice, fast data transmissions and high bandwidth applications. This high-performance Cat. 6A module is perfect for use in 10 Gigabit Ethernet (10GBASE-T) and future high-speed applications to 500 MHz.

Technical Data

DESCRIPTION [UNIT]	VALUE/VALUE RANGE
Standard	UL Listed IEC 60603-7: Electrical Characteristics of the Telecommunication Outlets ISO/IEC 11801 ed. 2.2: June 2011 EN 50173-1: May 2011
Protection class IP	IP 20
PoE	1
Connector class	connection module
Shielding connector (A)	shielded
Connector type (A)	RJ45
Category connector (A)	Cat. 6A ISO
Holder for connector / module	Mounting plate
Wiring diagram	TIA-568A / TIA-568B
Poles	8

Mechanical Data

DESCRIPTION [UNIT]	VALUE/VALUE RANGE
Color	red

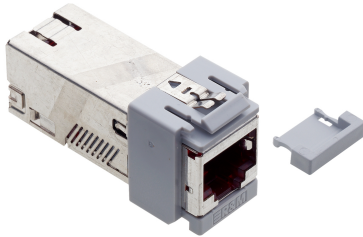
DESCRIPTION [UNIT]	VALUE/VALUE RANGE
Protection class IP	IP 20

RJ45 connection module of Cat. 6A ISO, for the setting up of transmission channels of Class EA with up to 4 plugged connections acc. to ISO/IEC 11801 ed. 2.2, June 2011, EN 50173-1 May 2011 (DIN EN 50173-1) and Class F on 2 pairs, complies with Cat. 6A requirements of the standards ISO/IEC 11801 ed. 2.2, June 2011, EN 50173-1 May 2011, as well as the U.S. standard Cat. 6A according to TIA 568-C.2, re-embedded tested in acc. with IEC 60603-7-51 and 60512-27-100, interoperable and backwards compatible with Category 6 and Category 5e. Suitable for 10GBASE-T applications in acc. with IEEE 802.3™ Section Four up to 500 MHz and 100 m. Tested in line with R&M's manufacturing control, performing 100% inspection. Compatible with RJ standard plugs (RJ11, RJ12, RJ45), connection with automatic wire cutting of installation cables AWG 26 - 22 (0.4 mm - 0.65 mm) and flexible cables AWG 26/7 - AWG 22/7 without special tools. X-Separator for individual pair shielding. Parallel pair termination without crossover in acc. with TIA 568-A/B, gold-plated bronze contacts for >1000 mating cycles, IDC contacts with >20 insertion cycles, contact resistance <5 mOhm, dielectric strength >1000 Veff. PoE and PoE+ compatible according to IEC 60512-99-001. 90° wire orientation without bending cable. With integral cable strain relief, including dust cover. Shield contacting by patented shield lance with integral cable strain relief, shield material tin-coated bronze, ground contacting through 1 contact finger for flat connectors 4.8 x 0.5 mm. Material: halogen-free and heavy-metal free in acc. with EU directives RoHS 2. Connection module Cat. 6A ISO, shielded, with EMC cover, dust cover, mounting plate, cable tie and installation instructions.

Product information

Connection Module Cat. 6A, 1xRJ45/s, Snap-in, grey, 100x

R509507
100 Stk.



The module for the highest standards, guarantees the best performance in the 10 Gigabit Ethernet cabling.

- RJ45 Cat. 6A ISO connection module, shielded
- Snap-in adapter
- EMC cover
- Dust cover
- Cable tie
- Installation instructions

The R&Mfreenet Cat. 6A shielded connection modules, part of the Advanced cabling system, are ideal for voice, fast data transmissions and high bandwidth applications. This high-performance Cat. 6A module is perfect for use in 10 Gigabit Ethernet (10GBASE-T) and future high-speed applications to 500 MHz.

090.5361 / ähnliche Abbildung

Description

The R&Mfreenet Cat. 6A shielded connection modules, part of the Advanced cabling system, are ideal for voice, fast data transmissions and high bandwidth applications. This high-performance Cat. 6A module is perfect for use in 10 Gigabit Ethernet (10GBASE-T) and future high-speed applications to 500 MHz.

Technical Data

DESCRIPTION [UNIT]	VALUE/VALUE RANGE
Standard	UL Listed IEC 60603-7-51: Electrical Characteristics of the Telecommunication Outlets ISO/IEC 11801 ed. 2.2: June 2011 EN 50173-1: May 2011
Protection class IP	IP 20
PoE	1
Connector class	connection module
Shielding connector (A)	shielded
Connector type (A)	RJ45
Category connector (A)	Cat. 6A ISO
Holder for connector / module	Snap-in
Wiring diagram	TIA-568A / TIA-568B
Poles	8

Mechanical Data

DESCRIPTION [UNIT]	VALUE/VALUE RANGE
Color	module, red / Snap-in adapter, gray (NCS 2502-B)

DESCRIPTION [UNIT]	VALUE/VALUE RANGE
Protection class IP	IP 20

RJ45 connection module of Cat. 6A ISO, for the setting up of transmission channels of Class EA with up to 4 plugged connections acc. to ISO/IEC 11801 ed. 2.2, June 2011, EN 50173-1 May 2011 (DIN EN 50173-1) and Class F on 2 pairs, complies with Cat. 6A requirements of the standards ISO/IEC 11801 ed. 2.2, June 2011, EN 50173-1 May 2011, as well the U.S. standard Cat. 6A according to TIA 568-C.2, re-embedded tested in acc. with IEC 60603-7-51 and 60512-27-100, interoperable and backwards compatible with Category 6 and Category 5e.

Suitable for 10GBASE-T applications in acc. with IEEE 802.3™ Section Four up to 500 MHz and 100 m.

Tested in line with R&M's manufacturing control, performing 100% inspection.

Compatible with RJ standard plugs (RJ11, RJ12, RJ45), connection with automatic wire cutting of installation cables AWG 26 - 22 (0.4 mm - 0.65 mm) and flexible cables AWG 26/7 - AWG 22/7 without special tools. X-Separator for individual pair shielding, Parallel pair termination without crossover in acc. with TIA 568-A/B, gold-plated bronze contacts for >1000 mating cycles, IDC contacts with >20 insertion cycles, contact resistance <5 mOhm, dielectric strength >1000 Veff. PoE and PoE+ compatible according to IEC 60512-99-001. 90° wire orientation without bending cable. With integral cable strain relief, including dust cover. Shield contacting by patented shield lance with integral cable strain relief, shield material tin-coated bronze, ground contacting through 1 contact finger for flat connectors 4.8 x 0.5 mm.

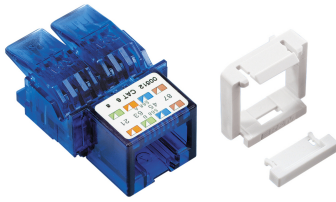
Material: halogen-free and heavy-metal free in acc. with EU directives RoHS 2.

Connection module Cat. 6A ISO, shielded, with EMC cover, dust cover, snap-in frame (gray), cable tie and installation instructions.

Product information

Connection Module Cat. 6, 1xRJ45/u, Snap-in, 10x

R304374
977821065
10 Stk.



- RJ45 Cat. 6 connection module, unshielded
- Snap-in adapter
- Dust cover
- Cable tie
- Installation instructions

010.2017.1/ ähnliche Abbildung

Technical Data

DESCRIPTION [UNIT]	VALUE/VALUE RANGE
Standard	UL Listed EN 50173-1: May 2011 IEC 60603-7: Electrical Characteristics of the Telecommunication Outlets ISO/IEC 11801 ed. 2.2: June 2011
Protection class IP	IP 20
PoE	1
Connector class	connection module
Shielding connector (A)	unshielded
Connector type (A)	RJ45
Category connector (A)	Cat. 6
Holder for connector / module	Snap-in
Wiring diagram	TIA-568A / TIA-568B
Poles	8

Mechanical Data

DESCRIPTION [UNIT]	VALUE/VALUE RANGE
Width	18.2 mm
Height	22.7 mm
Depth	41.3 mm
Color	module, blue / Snap-in adapter, gray (NCS 2502-B)

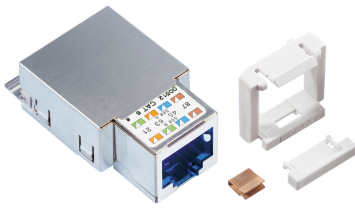
DESCRIPTION [UNIT]	VALUE/VALUE RANGE
Protection class IP	IP 20

RJ45 connection module of Category 6, for the establishing of transmission channels of class E with up to 4 plugged connections, complies with Category 6 requirements of the standards ISO/IEC 11801 ed. 2.2, June 2011, EN 50173-1, May 2011 (DIN EN 50173-1) as well as TIA 568-C, de-embedded tested in acc. with IEC 60603-7-4, interoperable and backwards compatible with Cat. 5e and Cat. 5. Suitable for 10GBASE-T applications in acc. with IEEE 802.3™ Section Four up to 500 MHz and 55 m. Tested in line with R&M's manufacturing control, performing 100% inspection. Compatible with RJ standard plugs (RJ11, RJ12, RJ45), PCB-free and tool-free Easy-Lock connection of installation cables AWG 24 – 22 (0.5 mm – 0.65 mm) and flexible cables AWG 26/7 – AWG 22/7. Parallel pair termination without crossover in acc. with TIA 568-A/B, gold-plated bronze contacts for >1000 mating cycles, IDC contacts with single-wire strain relief and >20 insertion cycles, contact resistance <50 mOhm, dielectric strength >1000 Veff. PoE and PoE+ compatible according to IEC 60512-99-001. With integral cable strain relief, including dust cover. Mounting dimensions 14,9 x 19,5 mm, max. material thickness 1.6 mm. Material: halogen-free and heavy-metal free in acc. with EU directives RoHS 2. Connection module Cat. 6, unshielded, with dust cover, snap-in frame (gray), cable tie and installation instructions.

Product information

Connection Module Real10 Cat. 6, 1xRJ45/s, Snap-in, 100x

R308732
100 Stk.



- RJ45 Real10 Cat. 6 connection module, shielded
- Snap-in adapter
- EMC cover
- Dust cover
- Cable tie
- Installation instructions

010.2016.1/ ähnliche Abbildung

Technical Data

DESCRIPTION [UNIT]	VALUE/VALUE RANGE
Standard	UL Listed EN 50173-1: May 2011 IEC 60603-7: Electrical Characteristics of the Telecommunication Outlets ISO/IEC 11801 ed. 2.2: June 2011
Protection class IP	IP 20
PoE	1
Connector class	connection module
Shielding connector (A)	shielded
Connector type (A)	RJ45
Category connector (A)	Real10 Cat. 6
Holder for connector / module	Snap-in
Wiring diagram	TIA-568A / TIA-568B
Poles	8

Mechanical Data

DESCRIPTION [UNIT]	VALUE/VALUE RANGE
Width	18.2 mm
Height	22.7 mm
Depth	41.3 mm
Color	module, blue / Snap-in adapter, gray (NCS 2502-B)

DESCRIPTION [UNIT]	VALUE/VALUE RANGE
Protection class IP	IP 20

RJ45 connection module of Category 6, for the establishing of transmission channels of class E and class EA with up to 4 plugged connections, and class F on 2 pairs, complies with Category 6 requirements of the standards ISO/IEC 11801 ed. 2.2, June 2011, EN 50173-1, May 2011 (DIN EN 50173-1) as well as TIA 568-C, de-embedded tested in acc. with IEC 60603-7-5, interoperable and backwards compatible with Category 5e and Category 5.

Suitable for 10GBASE-T applications in acc. with IEEE 802.3™ Section Four up to 500 MHz and 100 m.

Tested in line with R&M's manufacturing control, performing 100% inspection, plus permanent quality assurance through the "GHMT PREMIUM Verification Program" including certificate and test report acc. to DIN-EN ISO/IEC 17025, in German language.

Compatible with RJ standard plugs (RJ11, RJ12, RJ45), PCB-free and tool-free Easy-Lock connection of installation cables AWG 24 – 22 (0.5 mm – 0.65 mm) and flexible cables AWG 26/7 – AWG 22/7. Parallel pair termination without crossover in acc. with TIA 568-A/B, gold-plated bronze contacts for >1000 mating cycles, IDC contacts with single-wire strain relief and >20 insertion cycles, contact resistance <50 mOhm, dielectric strength >1000 Veff. PoE and PoE+ compatible according to IEC 60512-99-001. Shield contacting by patented shield lance with integral cable strain relief, shield material tin-coated bronze, ground contacting through 2 contact fingers for flat connectors 4.8 x 0.5 mm.

Mounting dimensions 14.9 x 19.5 mm, max. material thickness 1.6 mm.

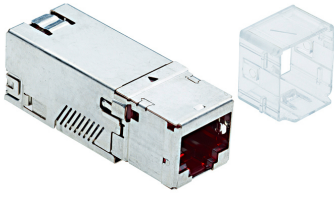
Material: halogen-free and heavy-metal free in acc. with EU directives RoHS 2.

Connection module Cat. 6, shielded, with EMC cover, dust cover, snap-in frame (gray), cable tie and installation instructions.

Product information

Connection Module Cat. 6A, 1xRJ45/s, adapter No.1, 10x

R808370
10 Stk.



The module for the highest standards, guarantees the best performance in the 10 Gigabit Ethernet cabling.

- RJ45 Cat. 6A ISO connection module, shielded, with adapter No.1
- EMC cover
- Dust cover
- Cable tie
- Installation instructions

The R&Mfreenet Cat. 6A shielded connection modules, part of the Advanced cabling system, are ideal for voice, fast data transmissions and high bandwidth applications. This high-performance Cat. 6A module is perfect for use in 10 Gigabit Ethernet (10GBASE-T) and future high-speed applications to 500 MHz.

090.6795 / ähnliche Abbildung

Description

The R&Mfreenet Cat. 6A shielded connection modules, part of the Advanced cabling system, are ideal for voice, fast data transmissions and high bandwidth applications. This high-performance Cat. 6A module is perfect for use in 10 Gigabit Ethernet (10GBASE-T) and future high-speed applications to 500 MHz.

Technical Data

DESCRIPTION [UNIT]	VALUE/VALUE RANGE
Standard	UL Listed IEC 60603-7-51: Electrical Characteristics of the Telecommunication Outlets ISO/IEC 11801 ed. 2.2: June 2011 EN 50173-1: May 2011
Protection class IP	IP 20
PoE	1
Connector class	connection module
Shielding connector (A)	shielded
Connector type (A)	RJ45
Category connector (A)	Cat. 6A ISO
Wiring diagram	TIA-568A / TIA-568B
Poles	8

Mechanical Data

DESCRIPTION [UNIT]	VALUE/VALUE RANGE
Color	red

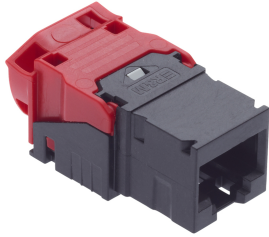
DESCRIPTION [UNIT]	VALUE/VALUE RANGE
Protection class IP	IP 20

RJ45 connection module of Cat. 6A ISO, for the setting up of transmission channels of Class EA with up to 4 plugged connections acc. to ISO/IEC 11801 ed. 2.2, June 2011, EN 50173-1 May 2011 (DIN EN 50173-1) and Class F on 2 pairs, complies with Cat. 6A requirements of the standards ISO/IEC 11801 ed. 2.2, June 2011, EN 50173-1 May 2011, as well the U.S. standard Cat. 6A according to TIA 568-C.2, re-embedded tested in acc. with IEC 60603-7-51 and 60512-27-100, interoperable and backwards compatible with Category 6 and Category 5e. Suitable for 10GBASE-T applications in acc. with IEEE 802.3™ Section Four up to 500 MHz and 100 m. Tested in line with R&M's manufacturing control, performing 100% inspection. Compatible with RJ standard plugs (RJ11, RJ12, RJ45), connection with automatic wire cutting of installation cables AWG 26 - 22 (0.4 mm - 0.65 mm) and flexible cables AWG 26/7 - AWG 22/7 without special tools. X-Separator for individual pair shielding. Parallel pair termination without crossover in acc. with TIA 568-A/B, gold-plated bronze contacts for >1000 mating cycles, IDC contacts with >20 insertion cycles, contact resistance <5 mOhm, dielectric strength >1000 Veff. PoE/PoEplus capable, 90° wire orientation without bending cable. With integral cable strain relief, including dust cover. Shield contacting by patented shield lance with integral cable strain relief, shield material tin-coated bronze, ground contacting through 1 contact finger for flat connectors 4.8 x 0.5 mm. Material: halogen-free and heavy-metal free in acc. with EU directives RoHS 2. Connection module Cat. 6A ISO, shielded, with EMC cover, dust cover, adapter No.1, cable tie and installation instructions.

Product information

Connection Module Cat. 6A EL, 1xRJ45/u, Special, 100x

R813511
977833065
100 Stk.



- RJ45 Cat. 6A EL connection module, unshielded
- Dust cover

090.7179 / ähnliche Abbildung

Technical Data

DESCRIPTION [UNIT]	VALUE/VALUE RANGE
Standard	UL Recognized IEC 60603-7-41: Electrical Characteristics of the Telecommunication Outlets ISO/IEC 11801 ed. 2.2: June 2011 EN 50173-1: May 2011
Protection class IP	IP 20
PoE	1
Connector class	connection module
Shielding connector (A)	unshielded
Connector type (A)	RJ45
Category connector (A)	Cat. 6 _A ISO
Holder for connector / module	Special (without mounting plate)
Wiring diagram	TIA-568A / TIA-568B
Poles	8

Mechanical Data

DESCRIPTION [UNIT]	VALUE/VALUE RANGE
Color	black / red

DESCRIPTION [UNIT]	VALUE/VALUE RANGE
Protection class IP	IP 20

RJ45 connection module of Cat. 6A ISO, for the setting up of transmission channels of Class EA with up to 4 connectors acc. to ISO/IEC 11801 ed. 2.2, June 2011, EN 50173-1 May 2011 (DIN EN 50173-1), complies with Cat. 6A requirements of the standards ISO/IEC 11801 ed. 2.2, June 2011, EN 50173-1 May 2011, as well the U.S. standard Cat. 6A according to TIA 568-C.2, re-embedded tested in acc. with IEC 60603-7-41 and 60512-27-100, interoperable and backwards compatible with Category 6 and Category 5e.
Suitable for 10GBASE-T applications in acc. with IEEE 802.3™ Section Four up to 500 MHz and 100 m.
Tested in line with R&M's manufacturing control, performing 100% inspection. Each module has an own serial number and is traceable.
Compatible with RJ standard plugs (RJ11, RJ12, RJ45), connection of installation cables AWG 26 - 22 (0.4 mm - 0.65 mm) and flexible cables AWG 26/7 - AWG 22/7 without special tools. Parallel pair termination without crossover in acc. with TIA 568-A/B, gold-plated bronze contacts for >1000 mating cycles, IDC contacts with ≥ 4 insertion cycles acc. to IEC 60352-3, contact resistance <5 mOhm, dielectric strength >1000 Veff. PoE and PoE+ compatible according to IEC 60512-99-001. With integral cable strain relief, including dust cover.
Material: halogen-free and heavy-metal free in acc. with EU directives RoHS 2.
Connection module Cat. 6A EL, red / black, unshielded and dust cover.

This is content of the last page entered from the last page, but changed in the configuraiton file of the country.