

This is the wishlist header

## Covertitle 12334

tiela 3242

sljidsldj saldjlasdj saljdxsa jDÖLKSj dök jsaöLJ KLÖ

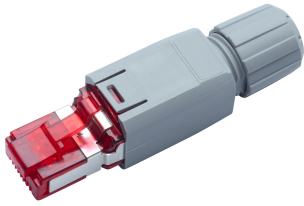


# This is the wishlist header

## FM45 Connector Cat. 6A IP20, 4P, TIA 568-A/B, 10x

### Datasheet

R815651 966704105 10 Stk.  
090.7437 / ähnliche Abbildung



Field-terminated RJ45 connector with housing.

Color housing: gray (RAL 7042).

Color termination block: red.

- RJ45 connector kit
- Housing IP20, plastic

- Instruction manual

### Technical Data

#### DESCRIPTION [UNIT] VALUE/VALUE RANGE

	UL Listed
Standard	ISO/IEC 11801: IEC 60603-7-3 EN 50173: May 2011 IEC 60603-7 RJ45, Cat.5
Protection class IP	IP 20
PoE	Yes
Wiring diagram	TIA-568A / TIA-568B

### Mechanical Data

#### DESCRIPTION [UNIT] VALUE/VALUE RANGE

Width	59 mm
Height	14 mm
Depth	14.6 mm

Field-terminated RJ45 plug connector, shielded and unshielded according to IEC 60603-7, ISO/IEC 11801 ed. 2.2: June 2011 and EN 50173-1: May 2011, Cat.6A 8-pole, terminated in IDC technology, suitable for solid or stranded wires, 2- to 8-wire conductors of diameter AWG 26 to AWG 22 (AWG 26/7 - 22/7), housing IP20, for cable diameters of 4.5 mm to 8.0 mm, coding in acc. with TIA 568-A/B. PoE and PoE+ compatible according to IEC 60512-99-001.

Features:

- Protection class: IP20 acc. to IEC 60529
- Color housing: traffic gray (RAL 7042)
- Material housing: PA (UL 94 V-0)
- Color termination block: red

## 19" Cabinet CMS 42U, 600x1000 mm

### Datasheet

R512787 1 Stk.  
090.6017 / ähnliche Abbildung



A very strong and sturdy cabinet system designed for use as server cabinet in data centers.

- 2 pairs of 19" profiles (front/back)
- Swing handle with lock
- Front door ventilated 83%
- Back door ventilated 83%

### Technical Data

#### DESCRIPTION [UNIT] VALUE/VALUE RANGE

Protection class IP	IP 20
---------------------	-------

## This is the wishlist header

### DESCRIPTION [UNIT] VALUE/VALUE RANGE

Distributor housing type stand-alone cabinet

Assembly empty

Fastening 19 "

Height units (U) 42 HE

Lockable 1

### Mechanical Data

#### DESCRIPTION [UNIT] VALUE/VALUE RANGE

Width 1978 mm

Height 600 mm

Depth 1000 mm

Color Code RAL 9005 Jet black

## 19" Cabinet CMS 42U, 600x1200 mm

### Datasheet

R512788 1 Stk.  
090.6017 / ähnliche Abbildung



A very strong and sturdy cabinet system designed for use as server cabinet in data centers.

- 2 pairs of 19" profiles (front/back)
- Swing handle with lock
- Front door ventilated 83%
- Back door ventilated 83%

### Technical Data

#### DESCRIPTION [UNIT] VALUE/VALUE RANGE

Protection class IP IP 20

Distributor housing type stand-alone cabinet

Assembly empty

Fastening 19 "

Height units (U) 42 HE

Lockable 1

### Mechanical Data

#### DESCRIPTION [UNIT] VALUE/VALUE RANGE

Width 1978 mm

Height 600 mm

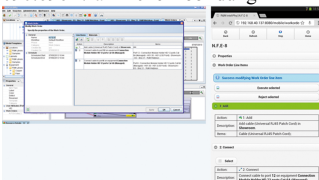
Depth 1200 mm

Color Code RAL 9005 Jet black

## R&MinteliPhy Manage In-House, feature upgrade 10 enclosures expansion

### Datasheet

R380130  
090.6962 / ähnliche Abbildung



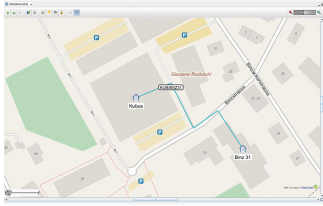
Removes the limitations on reports, work orders, resources and user-based attributes. Adds the possibility to visualize the infrastructure in 3D.

# This is the wishlist header

## R&MinteliPhy Manage In-House, GIS integration

### Datasheet

R380074  
030.5301 / ähnliche Abbildung



- Access to OpenStreetMap Data

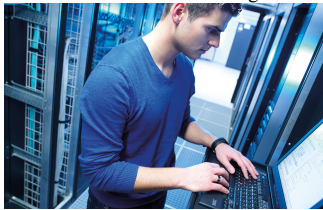
License for installation on In-House server. Allows access to data provided by geographical information systems (GIS) as background map.

- License for installation on In-House Server
- Calibration of maps with longitude and latitude
- Access to ESRI© ArcGIS© Server

## R&MinteliPhy Manage In-House, 10 enclosures, expansion, annual maintenance contract

### Datasheet

R380133  
090.7133 / ähnliche Abbildung



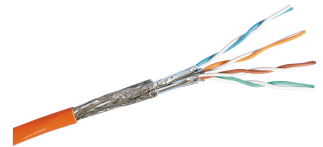
Annual fee for software updates / upgrades and template creation services.

- Access to the R&MinteliPhy Customer Support Website
- Software updates and upgrades
- Creation of customer specific templates

## Installation Cable Cat. 7, S/FTP, 4P, 1000 MHz, LSFRZH, orange, Dca, 1000 m

### Datasheet

R312595 101771954 1000 m  
010.2125 / ähnliche Abbildung



Cat.7, S/FTP cable "advanced Pro". Foil and tin-plated copper braid shielding. 100 Ohm impedance. Data transmission frequency of up to 1000 MHz.

### Technical Data

DESCRIPTION [UNIT]	VALUE/VALUE RANGE
	ISO/IEC 11801 ed. 2.2: June 2011
	EN 50173-1
	IEC 61156-5 2 <sup>nd</sup> ed.
Standard	EN 50288-4-1
	IEC 61034
	IEC 60754-2
	CPR fire class: EN50575
	IEC 60332-3-24
Protection class IP	IP 20
PoE	Yes
Cable class	installation cable
Cable category	Cat. 7
Cable shielding	S/FTP
Cable jacket material	LSFRZH
Fire class	Dca

## This is the wishlist header

DESCRIPTION [UNIT]	VALUE/VALUE RANGE
Cable jacket characteristics	Zero-halogen Flame-retardant
Cable protection	No protection
Cable overall diameter	Ø 7.5 mm
Conductor diameter	AWG 23
Cable design	normal
Number of wires	8
Stranding	4 pairs
Wire type	Wire
Max. test frequency	1000 MHz

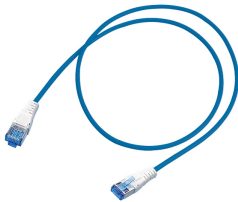
### Mechanical Data

DESCRIPTION [UNIT]	VALUE/VALUE RANGE
Cable length	1000 m
Color Code RAL	2003 Pastel orange

### Patch Cord Real10 Cat. 6, S/FTP, 4P, LSFRZH, blue, RJ45/s-RJ45/s, 0.5 m

#### Datasheet

R313818 10 Stk.  
042.0014 / ähnliche Abbildung



Cable identification: S/FTP  
Outer jacket: LSFRZH  
Conductor diameter copper strand: AWG 26/7  
Screened in pairs: AL/foil  
Overall screen: copper braid

Outer diameter: max. 6.2 mm

### Technical Data

DESCRIPTION [UNIT]	VALUE/VALUE RANGE
Standard	Compliant with Cat. 6, Class E (250 MHz) requirements: ISO/IEC 11801 ed. 2.2 Compliant with Cat. 6 component standard IEC 60603-7-4 Compliant with Cat. 6 component standard IEC 60603-7-5 Fulfilled the standard IEC 61935-2:2010
Protection class IP	IP 20
PoE	Yes
Connector class	connector
Shielding connector (A)	shielded
Connector type (A)	RJ45
Category connector (A)	Real10 Cat. 6
Shielding connector (B)	shielded

## This is the wishlist header

DESCRIPTION [UNIT]	VALUE/VALUE RANGE
Category connector (B)	RJ45 RJ45
Cable class	patch cord
Cable category	Real10 Cat. 6
Cable shielding	S/FTP
Cable jacket material	LSFRZH Cable, metal-free
Cable jacket characteristics	Zero-halogen Flame-retardant
Cable overall diameter	6.2 mm
Conductor diameter	AWG 26/7
Number of wires	8
Stranding	4 pairs
Wire type	stranded wire

### Mechanical Data

DESCRIPTION [UNIT]	VALUE/VALUE RANGE
Cable length	0.5 m
Color Code RAL	5012 Light blue

Flexible cable, S/FTP, 4 x 2 x AWG 26/7, LSFRZH, 5012 Light blue. Low-smoke in acc. with IEC 61034, flame-retardant in acc. with IEC 60332-3C and halogen-free in acc. with IEC 60754-1. Halogen-free and heavy-metal free in acc. with EU directives RoHS 2.

Mounted on both sides with

RJ45 connector compliant with Cat. 6 component standard. Key standard: IEC 60603-7 RJ45 category 6; IEC 60603-7-1 to 5. Strain-relief function in acc. with TIA 568-C.

Complies with requirements of Cat. 6 for the establishing of transmission links of class E and class EA in acc. with ISO/IEC 11801 ed. 2.2, June 2011 and EN 50173-1, May 2011 (DIN EN 50173-1). Suitable for 10GBASE-T applications in acc. with IEEE 802.3™ Section Four.

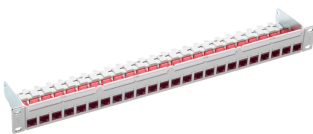
Optional:

Visual coding, mechanical coding and lock protection.

### 19" 1U PC Patch Panel 24xRJ45/u, Cat. 6A, gray, fully populated

#### Datasheet

R813494 1 Stk.  
090.7196 / ähnliche Abbildung



- 19" 1U 24-port patch panel, empty, unshielded
- 24 Cat. 6A ISO connection modules, RJ45/u incl. dust covers
- 19" mounting kit
- 4 labeling strips
- Cable ties

- Installation instructions

#### Technical Data

DESCRIPTION [UNIT]	VALUE/VALUE RANGE
--------------------	-------------------

# This is the wishlist header

DESCRIPTION [UNIT]	VALUE/VALUE RANGE
Standard	IEC 60603-7-41: Electrical Characteristics of the Telecommunication Outlets ISO/IEC 11801 ed. 2.2: June 2011 EN 50173-1: May 2011
Protection class IP	IP 20
PoE	Yes
Shielding connector (A)	unshielded
Connector type (A)	RJ45
Category connector (A)	Cat. 6 <sub>A</sub> ISO
Number of connectors (A)	24
Holder for connector / module	Special (without mounting plate)
Assembly	fully populated
Fastening	19 "
Rack mounting version	patch panel
Capacity (ports)	24
Height units (U)	1 HE

## Mechanical Data

DESCRIPTION [UNIT]	VALUE/VALUE RANGE
Width	482.6 mm
Height	43.65 mm
Depth	83.4 mm
Color	front, medium gray (NCS 2502-B) / steel, blue, chromitized

Modular patch panel with integrated cable tie shelf, 19" fastening kit, labeling fields with exchangeable labeling strips. The ports are prepared for a visual color coding system and automated infrastructure management systems. Panel polycarbonate, fiber-glass-reinforced, halogen-free material, UL 94 listed and steel: DC01 (1.0330), 1.5 mm. Color front: medium gray (NCS 2502-B) / steel: blue, chromitized.

RJ45 connection module of Cat. 6A ISO, for the setting up of transmission channels of Class EA with up to 4 plugged connections acc. to ISO/IEC 11801 ed. 2.2, June 2011, EN 50173-1 May 2011 (DIN EN 50173-1) and Class F on 2 pairs, complies with Cat. 6A requirements of the standards ISO/IEC 11801 ed. 2.2, June 2011, EN 50173-1 May 2011, as well the U.S. standard Cat. 6A according to TIA 568-C.2, re-embedded tested in acc. with IEC 60603-7-41 and 60512-27-100, interoperable and backwards compatible with Category 6 and Category 5e.

Suitable for 10GBASE-T applications in acc. with IEEE 802.3™ Section Four up to 500 MHz and 100 m.

Tested in line with R&M's manufacturing control, performing 100% inspection.

Compatible with RJ standard plugs (RJ11, RJ12, RJ45), connection with automatic wire cutting of installation cables AWG 26 – 22 (0.4 mm – 0.65 mm) and flexible cables AWG 26/7 – AWG 22/7 without special tools. X-Separator for individual pair shielding. Parallel pair termination without crossover in acc. with TIA 568-A/B, gold-plated bronze contacts for >1000 mating cycles, IDC contacts with >20 insertion cycles, contact resistance <5 mOhm, dielectric strength >1000 Veff. PoE and PoE+ compatible according to IEC 60512-99-001. 90° wire orientation without bending cable. With integral cable strain relief, including dust cover.

Material: halogen-free and heavy-metal free in acc. with EU directives RoHS 2.

Connection module Cat. 6A ISO, unshielded, with dust cover, cable tie and installation instructions.

## Single Cable, Cat. 6<sub>A</sub>, 4P, 650MHz, plug Cat. 6<sub>A</sub> RJ45/s - plug Cat. 6<sub>A</sub> RJ45/s, 1.0 m

### Datasheet

R803186 1 Stk.  
090.5391 / ähnliche Abbildung



Wiring diagram: TIA 568-A  
Cable identification: S/FTP  
Outer jacket: LSZH  
Conductor diameter: AWG 26/1 (solid wire)  
Screened in pairs: AL/foil

# This is the wishlist header

Overall screen: copper braid

Outer diameter: 5.8 mm

## Technical Data

DESCRIPTION [UNIT]	VALUE/VALUE RANGE
Standard	Compliant with Cat. 6 <sub>A</sub> ISO, Class E <sub>A</sub> (500 MHz) requirements: ISO/IEC 11801 ed. 2.2 Complies with Category 6 <sub>A</sub> ISO requirements of the standard ISO/IEC 11801 ed. 2.2: June 2011 Complies with Category 6 <sub>A</sub> ISO requirements of the standard EN 50173-1: May 2011 Complies with Category 6 <sub>A</sub> ISO requirements of the standard TIA 568-C.2 Compliant with Cat. 6 <sub>A</sub> ISO component standards IEC 60603-7-51
Protection class IP	IP 20
PoE	Yes
Shielding connector (A)	shielded
Connector type (A)	RJ45
Category connector (A)	Cat. 6 <sub>A</sub> ISO
Shielding connector (B)	shielded
Category connector (B)	RJ45 RJ45
Cable category	Cat. 6 <sub>A</sub> ISO
Cable shielding	S/FTP
Cable jacket material	LSZH Cable, metal-free
Cable jacket characteristics	Zero-halogen Flame-retardant
Cable overall diameter	5.8 mm
Conductor diameter	AWG 26
Number of wires	8
Stranding	1 x 4 pairs
Max. test frequency	650 MHz

## Mechanical Data

DESCRIPTION [UNIT]	VALUE/VALUE RANGE
Cable length	1 m
Color Code RAL	7032 Pebble gray

## Single Cable, Cat. 6<sub>A</sub>, 4P, 650MHz, plug Cat. 6<sub>A</sub> RJ45/s - plug Cat. 6<sub>A</sub> RJ45/s, 2.0 m

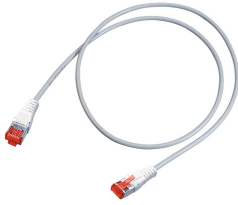
### Datasheet

R803878 1 Stk.  
090.5391 / ähnliche Abbildung

Wiring diagram: TIA 568-A

Cable identification: S/FTP

## This is the wishlist header



Outer jacket: LSZH  
Conductor diameter: AWG 26/1 (solid wire)  
Screened in pairs: AL/foil  
Overall screen: copper braid  
Outer diameter: 5.8 mm

### Technical Data

DESCRIPTION [UNIT]	VALUE/VALUE RANGE
Standard	Compliant with Cat. 6 <sub>A</sub> ISO, Class E <sub>A</sub> (500 MHz) requirements: ISO/IEC 11801 ed. 2.2 Complies with Category 6 <sub>A</sub> ISO requirements of the standard ISO/IEC 11801 ed. 2.2: June 2011 Complies with Category 6 <sub>A</sub> ISO requirements of the standard EN 50173-1: May 2011 Complies with Category 6 <sub>A</sub> ISO requirements of the standard TIA 568-C.2 Compliant with Cat. 6 <sub>A</sub> ISO component standards IEC 60603-7-51
Protection class IP	IP 20
PoE	Yes
Shielding connector (A)	shielded
Connector type (A)	RJ45
Category connector (A)	Cat. 6 <sub>A</sub> ISO
Shielding connector (B)	shielded
Category connector (B)	RJ45 RJ45
Cable category	Cat. 6 <sub>A</sub> ISO
Cable shielding	S/FTP
Cable jacket material	LSZH Cable, metal-free
Cable jacket characteristics	Zero-halogen Flame-retardant
Cable overall diameter	5.8 mm
Conductor diameter	AWG 26
Number of wires	8
Stranding	1 x 4 pairs
Max. test frequency	650 MHz

### Mechanical Data

DESCRIPTION [UNIT]	VALUE/VALUE RANGE
Cable length	2 m
Color Code RAL	7032 Pebble gray

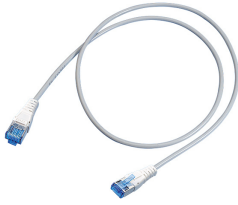
**Single Cable, Cat. 6, 4P, 650MHz, plug Cat. 6 RJ45/s - module Cat. 6 RJ45/s, 7.5 m**

### Datasheet

R803896 1 Stk.

# This is the wishlist header

010.2076 / ähnliche Abbildung



Wiring diagram: TIA 568-A

Cable identification: S/FTP

Outer jacket: LSZH

Conductor diameter: AWG 26/1 (solid wire)

Screened in pairs: AL/foil

Overall screen: copper braid

Outer diameter: 5.8 mm

## Technical Data

DESCRIPTION [UNIT]	VALUE/VALUE RANGE
Standard	ISO/IEC 11801
Protection class IP	IP 20
PoE	Yes
Shielding connector (A)	shielded
Connector type (A)	RJ45
Category connector (A)	Real10 Cat. 6
Shielding connector (B)	shielded
Connector type (B)	RJ45
Category connector (B)	RJ45
Cable category	Real10 Cat. 6
Cable shielding	S/FTP
Cable jacket material	LSZH
Cable jacket characteristics	Cable, metal-free Zero-halogen Flame-retardant
Cable overall diameter	5.8 mm
Conductor diameter	AWG 26
Number of wires	8
Stranding	1 x 4 pairs
Max. test frequency	650 MHz

## Mechanical Data

DESCRIPTION [UNIT]	VALUE/VALUE RANGE
Cable length	7.5 m
Color Code RAL	7032 Pebble gray

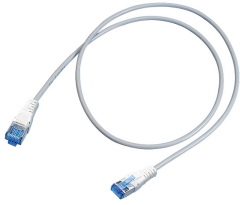
**Single Cable, Cat. 6, 4P, 650MHz, plug Cat. 6 RJ45/s - plug Cat. 6 RJ45/s, 3.0 m**

## Datasheet

R803882 1 Stk.

010.2076 / ähnliche Abbildung

# This is the wishlist header



Wiring diagram: TIA 568-A  
Cable identification: S/FTP  
Outer jacket: LSZH  
Conductor diameter: AWG 26/1 (solid wire)  
Screened in pairs: AL/foil

Overall screen: copper braid

Outer diameter: 5.8 mm

## Technical Data

DESCRIPTION [UNIT]	VALUE/VALUE RANGE
Standard	ISO/IEC 11801
Protection class IP	IP 20
PoE	Yes
Shielding connector (A)	shielded
Connector type (A)	RJ45
Category connector (A)	Real10 Cat. 6
Shielding connector (B)	shielded
Connector type (B)	RJ45
Category connector (B)	RJ45
Cable category	Real10 Cat. 6
Cable shielding	S/FTP
Cable jacket material	LSZH
	Cable, metal-free
Cable jacket characteristics	Zero-halogen
	Flame-retardant
Cable overall diameter	5.8 mm
Conductor diameter	AWG 26
Number of wires	8
Stranding	1 x 4 pairs
Max. test frequency	650 MHz

## Mechanical Data

DESCRIPTION [UNIT]	VALUE/VALUE RANGE
Cable length	3 m
Color Code RAL	7032 Pebble gray

## U-Box 4410 8x2xRJ45/u Cat.6A EL

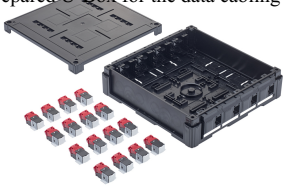
### Datasheet

R832959 1 Stk.  
090.7716 / ähnliche Abbildung

U-Box with 16x modules Cat.6A EL prepare to equip

## This is the wishlist header

Prepared U-Box for the data cabling to open up workplaces. The U-Box can be installed in double floors or a track. Current connection is easily possible by means of a connecting cable with a suitable power box.



### Description

*Prepared U-Box for the data cabling to open up workplaces. The U-Box can be installed in double floors or a track. Current connection is easily possible by means of a connecting cable with a suitable power box.*

### Technical Data

#### DESCRIPTION [UNIT] VALUE/VALUE RANGE

Protection class IP IP 20

Outlet type outlet

### Mechanical Data

#### DESCRIPTION [UNIT] VALUE/VALUE RANGE

Color Code RAL 9005 Jet black

## U-Box 4210 4xT13/1xCG M20

### Datasheet

R832956 1 Stk.  
090.7723 / ähnliche Abbildung



U-Box with 4x T13 - outlet pre-wired + cable entry M20

The U-box pre-wired and wired is suitable for double floors / Wall-ceiling mounting and cable tray. It can also be docked to a U-box for pure data transmission by means of connecting wings.

### Description

*The U-box pre-wired and wired is suitable for double floors / Wall-ceiling mounting and cable tray. It can also be docked to a U-box for pure data transmission by means of connecting wings.*

### Technical Data

#### DESCRIPTION [UNIT] VALUE/VALUE RANGE

Protection class IP IP 20

Outlet type T13

### Mechanical Data

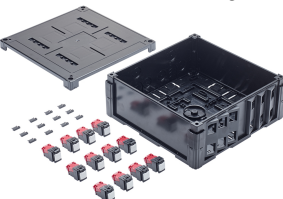
#### DESCRIPTION [UNIT] VALUE/VALUE RANGE

Color Code RAL 9005 Jet black

## U-Box 4415 12xRJ45/u Cat.6A EL Snap-in

### Datasheet

R832961 1 Stk.  
090.7715 / ähnliche Abbildung



The U-box pre-wired and wired is suitable for double floors / Wall-ceiling mounting and cable tray. It can also be docked to a U-box for pure data transmission by means of connecting wings.

### Description

*The U-box pre-wired and wired is suitable for double floors / Wall-ceiling mounting and cable tray. It can also be docked to a U-box for pure data transmission by means of connecting wings.*

### Technical Data

#### DESCRIPTION [UNIT] VALUE/VALUE RANGE

This is the wishlist header

**DESCRIPTION [UNIT] VALUE/VALUE RANGE**

Protection class IP IP 20

Outlet type outlet

**Mechanical Data**

**DESCRIPTION [UNIT] VALUE/VALUE RANGE**

Color Code RAL 9005 Jet black

## This is the wishlist header

This is content of the last page entered from the last page, but changed in the configuraiton file of the country.